

SPECIFICATIONS



Features

- Max Flow Rate : 1.5GPM(5.7L/Min) @ 60 PSI
- Fits Single Hole
- Fits 3 Hole with 8" Deck plate (Optional)
- Polished Chrome(CP)
- ADA





Components

- Metal Lever Handle
- Finished Metal Body
- Ceramic Disc Cartridge
- W/ Pull Out Spray Head
- W/O Deck Plate
- Lead Free*
- Water Saving Aerator

Drain Type

ED134-CP




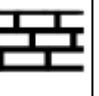
Standards & Certifications

			
✓	✓	✓	✓

Available Finishes

			
✓			

Mount Type

			
✓			

Specified model meets or exceeds the following:

- ASME A112.18.1/CSA B125.1
- IAPMO/cUPC
- NSF/ANSI 372
- NSF/ANSI/CAN 61 – Sec. 9: Q≤1
- ADA
- *≤ .25% Pb

AVAILABLE MODELS

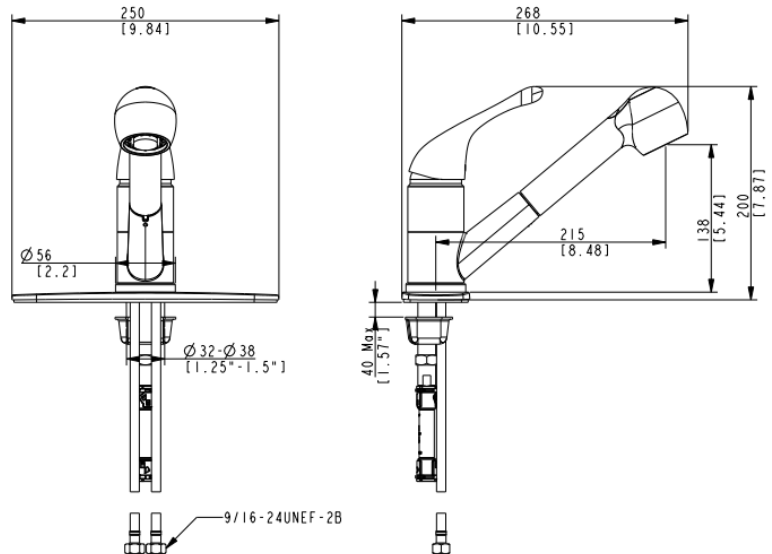
ED134D-CP – Faucet W/Deck plate

Mainline products have been manufactured under the highest standards of quality and workmanship. That is why we offer "Limited Lifetime" warranty on the function and finish of our faucets.



Please visit www.mainlinecollection.ca for available finishes. Finish is defined by additional suffix.

Drawings



* Deck Plate not included

SUBMITTAL INFORMATION

Name: _____ Contractor: _____

Location: _____ Contact #: _____

Notes: _____

Service & Parts

Please reach out to epleservice@emcoltd.com for support/ visit mainlinecollection.ca / CANADA +1 (450) 621 5636