

### SPECIFICATIONS



#### Features

- Max Flow Rate : 1.5GPM(5.7L/Min) @ 60 PSI
- Fits Single Hole & 3 Hole Configurations
- Polished Chrome(CP)
- ADA





#### Components

- Metal Lever Handle
- Finished Metal Body
- Ceramic Disc Cartridge
- W/ Pull Out Spray Head
- W/8" Deck Plate
- Lead Free\*
- Water Saving Aerator

#### Drain Type

ED134D-CP

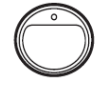
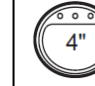


#### Standards & Certifications

			
✓	✓	✓	✓

#### Available Finishes

			
✓			

#### Mount Type

			
✓		✓	

Specified model meets or exceeds the following:

- ASME A112.18.1/CSA B125.1
- IAPMO/cUPC
- NSF/ANSI 372
- NSF/ANSI/CAN 61 – Sec. 9: Q≤1
- ADA
- \*≤ .25% Pb

#### AVAILABLE MODELS

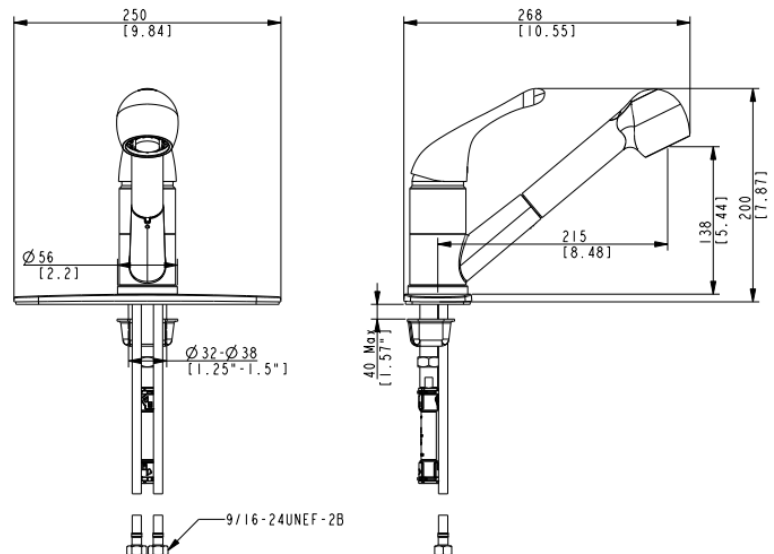
ED134-CP – Faucet

Mainline products have been manufactured under the highest standards of quality and workmanship. That is why we offer "Limited Lifetime" warranty on the function and finish of our faucets.



Please visit [www.mainlinecollection.ca](http://www.mainlinecollection.ca) for available finishes. Finish is defined by additional suffix.

#### Drawings



### SUBMITTAL INFORMATION

Name: \_\_\_\_\_ Contractor: \_\_\_\_\_

Location: \_\_\_\_\_ Contact #: \_\_\_\_\_

Notes: \_\_\_\_\_

#### Service & Parts

Please reach out to [epleservice@emcoltd.com](mailto:epleservice@emcoltd.com) for support/ visit [mainlinecollection.ca](http://mainlinecollection.ca) / CANADA +1 (450) 621 5636