

## SPECIFICATIONS





### Features

- Finished Metal Body
- Mounting Hardware included
- Coordinates with JOVI and BLIS Suites







MLRRH

### Standards & Certifications

|   |   |   |  |
|---|---|---|--|
|  |  |  |  |
|   | ✓   |   |  |

### Available Finishes

|   |   |   |   |
|---|---|---|---|
|  |  |  |  |
| ✓   |   | ✓   | ✓   |

Specified model meets or exceeds the following:

- ASME A112.18.1/CSA B125.1
- IAPMO/cUPC

#### AVAILABLE MODELS

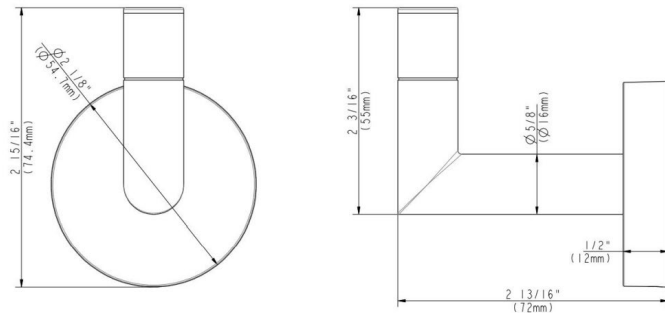
MLRPH – Rondo Paper Holder  
MLRTR – Rondo Towel Ring  
MLR24TB – Rondo 24" Towel Bar

Mainline products have been manufactured under the highest standards of quality and workmanship. That is why we offer "Limited 5 Year" warranty on the function and finish of our faucets.



Please visit [www.mainlinecollection.ca](http://www.mainlinecollection.ca) for available finishes. Finish is defined by additional suffix.

### Drawings



## SUBMITTAL INFORMATION

Name: \_\_\_\_\_ Contractor: \_\_\_\_\_

Location: \_\_\_\_\_ Contact #: \_\_\_\_\_

Notes: \_\_\_\_\_

#### Service & Parts

Please reach out to [epleservice@emcoltd.com](mailto:epleservice@emcoltd.com) for support/ visit [mainlinecollection.ca](http://mainlinecollection.ca) / CANADA +1 (450) 621 5636